



OXFAM IN CHINA



**OXFAM
IN CHINA**



Recycled woodfree paper / Soy oil-based ink

www.oxfam.org.hk



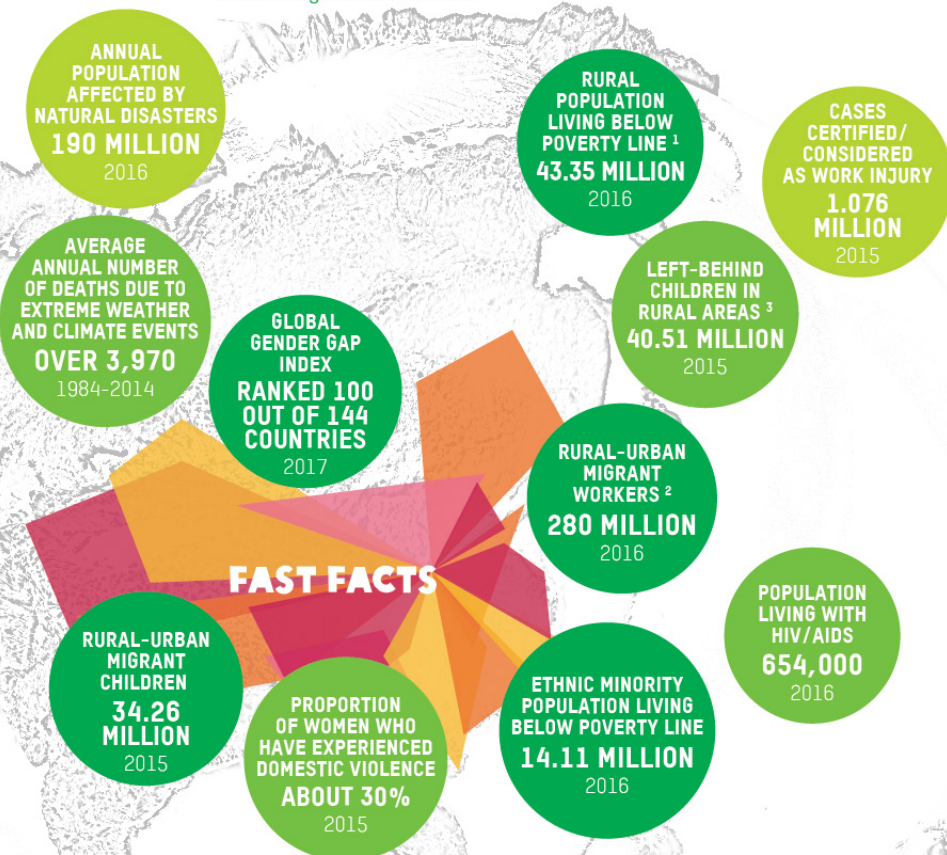
樂施會
OXFAM
Hong Kong

無窮世界
World
Without
Poverty

1. WHY ARE WE WORKING IN MAINLAND CHINA?

Since 1987, Oxfam Hong Kong (OHK) has been working in mainland China to reduce poverty and carry out humanitarian responses, policy advocacy work and public education.

China is the first country that met the United Nations Millennium Development Goals' target of halving extreme poverty. However, as of the end of 2016, the number of rural poor in China reached 43.35 million, making China one of the countries with the largest population of poor in the world. In addition, China's Gini coefficient reached 0.465, surpassing the internationally recognised warning line of 0.4. Moreover, the income gaps between urban and rural areas, and eastern as well as less-developed central and western regions remain wide.



Sources: National Bureau of Statistics, National Health and Family Planning Commission, National Development and Reform Commission, Chinese Centre for Disease Control and Prevention, Ministry of Human Resources and Social Security, All-China Women's Federation, Ministry of Civil Affairs, State Ethnic Affairs Commission, 'Global Gender Gap Report' of World Economic Forum, Annual Report on Actions to Address Climate Change (2015): A New Start and Hope in Paris

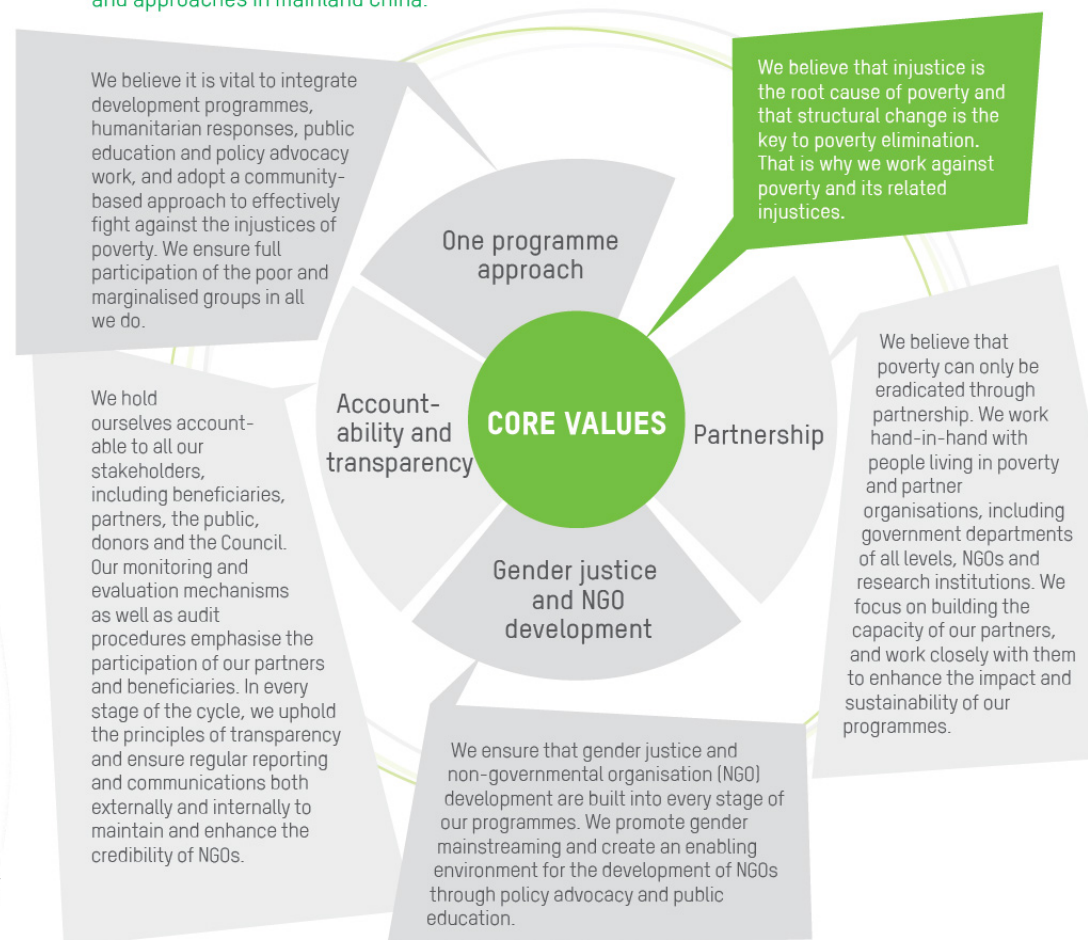
Notes:

1. The national poverty line of China is officially set at 2,300 yuan (approximately USD 354) per year.
2. 'Rural migrant workers' refers to persons who hold rural household-registration and are engaged in off-farm work or work outside of their registered residence for six months or more. The household registration, or hukou, system in China ties people's access to subsidised public services to their residential status.
3. 'Left-behind children' usually refers to those under the age of 18 living in their rural registered residence without both of their parents because one or both parents have migrated to other areas in search of work.
4. 'Rural migrant children' are those who are under the age of 18 who have moved to the city with their working parents for more than six months.

2. OUR BELIEFS

Within the international Oxfam confederation, OHK is responsible for poverty reduction and advocacy work in China. China's growing international political and economic power has increasing impact on our global poverty reduction and sustainable development goals.

Oxfam adheres to the following beliefs which guide all our objectives, strategies and approaches in mainland China.

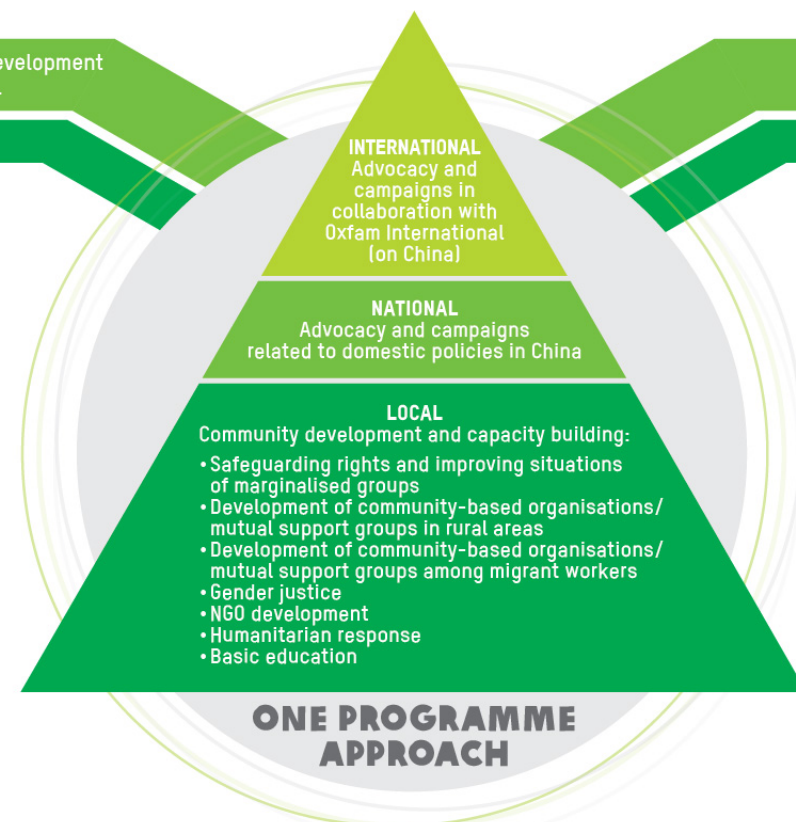


3. OUR STRATEGIES AND APPROACHES

One programme approach

To achieve the goal of a 'World without Poverty', Oxfam utilises a 'one programme approach', that is, the integration of sustainable development in communities, humanitarian relief, disaster management, domestic and international policy advocacy and public education in China.

Areas of work	Strategic goals	Our approaches
Policy research and advocacy	To advocate pro-poor policies, and ensure that the voices of the public are heard and valued by policymakers in China	<ul style="list-style-type: none"> • Community-based action research • Effective communication with the government, experts and enterprises • Capacity building of NGOs on policy analysis and collective action • Participation in policy research and advocacy work initiated by the Oxfam confederation • South-South cooperation between China and developing countries 
Public education	<ul style="list-style-type: none"> • To raise public awareness on poverty and promote participation in public affairs • To empower NGOs • To promote equality and diversity within society 	<ul style="list-style-type: none"> • Dissemination activities, including seminars and explore the use of new media • Empowerment of community-based NGOs • Youth education on development and gender equality 
Development programmes	<ul style="list-style-type: none"> • To improve livelihoods and communities' ability to manage disasters and adapt to climate change • To promote equitable and diversified quality education • To promote decent work and social inclusion of migrant workers • To improve urban and rural health (especially with regards to HIV/AIDS) • To safeguard the rights and improve the situations of marginalised groups through empowerment 	<ul style="list-style-type: none"> • Integrated approach in programme management • Building capacity of and collaboration with community-based NGOs 
Humanitarian response	<ul style="list-style-type: none"> • To respond to urgent needs of disaster-affected populations, with particular focus on food security and WASH (Water, Sanitation, and Hygiene Promotion) • To enhance community resilience and safeguard rights to life and security 	<ul style="list-style-type: none"> • Knowledge and awareness raising on disaster management • Regional learning and collaboration with NGOs • Cash transfer programmes 



Monitoring, Evaluation and Learning (MEL)

Oxfam seeks to hold ourselves accountable to all stakeholders. Over the past few years, we have continued to accumulate experience in monitoring and evaluating programmes together with our beneficiaries and partners in China. We also evaluate the impact of programmes through external consultants as needed and produce evaluation reports in various thematic programmes for internal and external learning. Oxfam in China aspires to make unique contributions to the global movement for change by consolidating and sharing analyses of the country context, best practices and impacts of our work across the confederation.

Our MEL strategies:

1. Enhancing MEL system and building the capacities of programme staff to ensure effectiveness, transparency and accountability of our work.
2. Consolidating and disseminating the results of our monitoring and evaluation work to facilitate internal and external learning and collaboration for better programme development and innovation.
3. Sharing programme experiences and case studies in China with Oxfam affiliates.

4. PROGRAMME OVERVIEW

Oxfam has been working in China for over three decades. As of March 2017, we have supported over 3,300 projects in 31 provinces/autonomous regions/municipalities. More than US\$200 million has been earmarked to support over 13 million people in China, including poor farmers in remote mountainous areas, ethnic minorities, women and children, migrant workers and people living with HIV/AIDS.

4.1. GEOGRAPHICAL FOCUS

At present, the majority of OHK's programme work in the Mainland is located in Beijing, Yunnan, Gansu, Guizhou, Guangdong, Shaanxi, Qinghai, Anhui, Sichuan, Shandong, and Hebei. All projects are coordinated by staff at our headquarters in Hong Kong.

The table below illustrates our offices and respective thematic programmes:

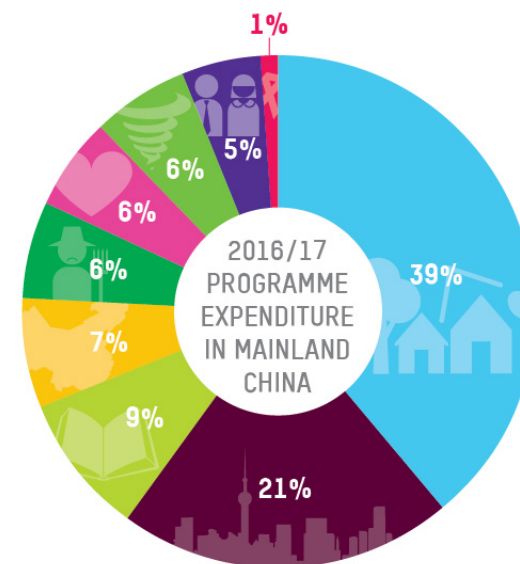
OFFICE	THEMATIC PROGRAMMES	PROVINCE / CITY COVERAGE	PROFESSIONAL SUPERVISORY UNIT
OXFAM HONG KONG BEIJING OFFICE	<ul style="list-style-type: none"> • China and the Developing World • Agriculture and Poverty Reduction Policy • Climate Change and Poverty • Gender • NGO Development • Youth Civic Education • Urban Livelihood • Basic Education • Rural Development • Disaster Management 	All areas in mainland China except Yunnan, Gansu and Guangdong provinces	Chinese People's Association for Friendship with Foreign Countries
OXFAM HONG KONG YUNNAN OFFICE	<ul style="list-style-type: none"> • Rural Development • Disaster Management • HIV/AIDS 	Yunnan Province	Yunnan Provincial Poverty Alleviation Office
OXFAM HONG KONG GANSU OFFICE	<ul style="list-style-type: none"> • Rural Development • Disaster Management • Basic Education 	Gansu Province	Gansu Education Bureau
OXFAM HONG KONG GUANGDONG OFFICE	<ul style="list-style-type: none"> • Gender • NGO Development • Urban Livelihood 	Guangdong Province	Guangdong Civil Affairs Bureau

4.2. PARTNERS

In the 2016/2017 financial year, we worked with a total of 301 partners on projects in mainland China, including national NGOs (46%), government-local (14%), academic, training and research institutions (24%), women's organisations (5%), the private sector (8%), international NGOs (1%), and the public sector and government-national (2%). Among them, 71 were new partners.

4.3. PROGRAMME EXPENDITURE

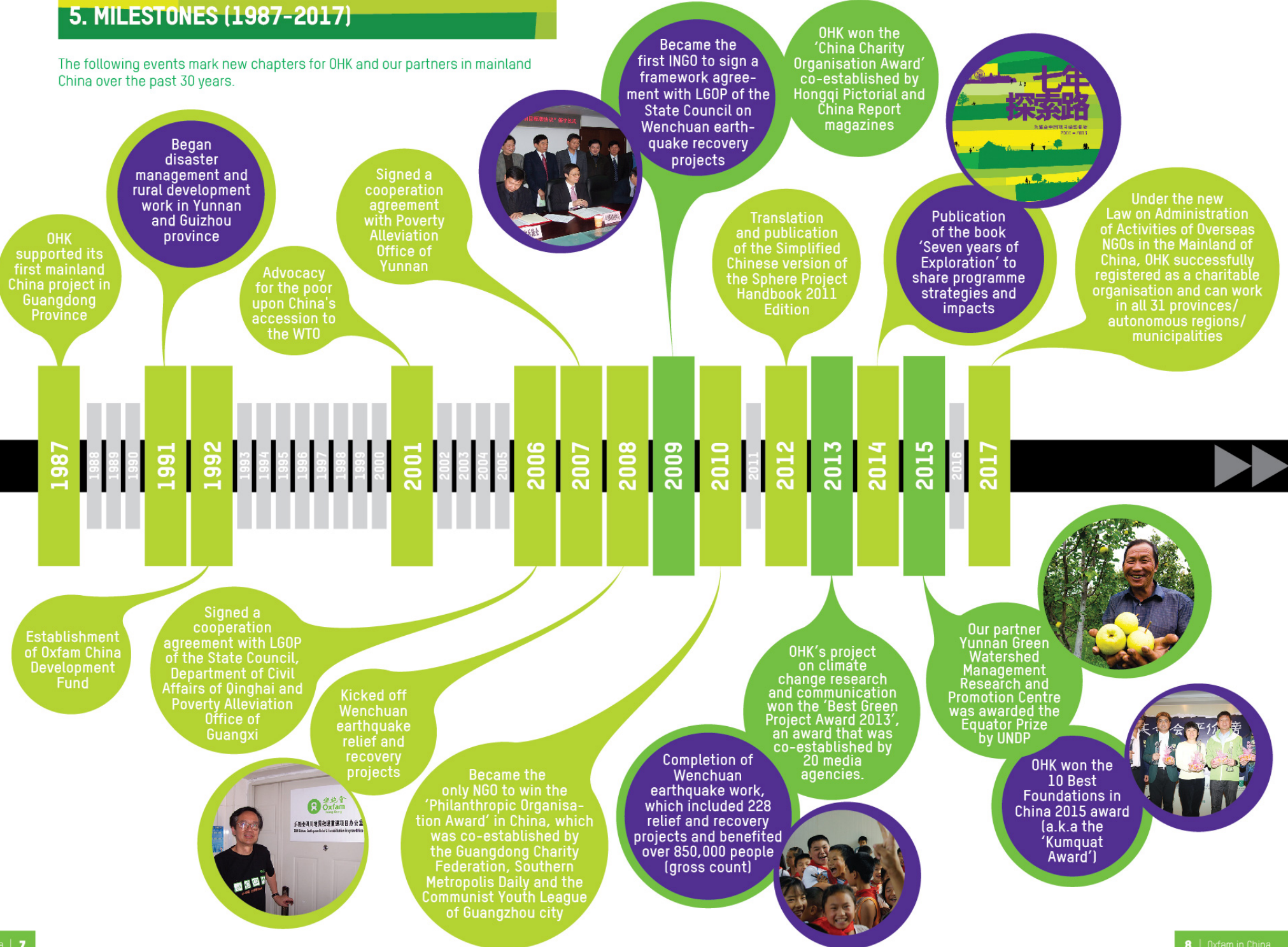
A total of US\$ 9.7 million has been allocated to programmes in mainland China for the 2016/2017 financial year. The breakdown for various thematic programmes is as follows:



 Rural Development and Disaster Management	Work for sustainable development of poor rural communities. Help improve the livelihoods of poor communities affected by disasters in the western region, strengthen their capacity so that they can bounce back better from disasters.
 Urban Livelihood	Promote migrant workers' sustainable livelihoods in cities.
 Basic Education	Help disadvantaged children in the western region have equal access to quality compulsory basic education.
 China and the Developing World	Urge the government and corporations in China to adopt sustainability policies and investment behaviours to be a progressive force for development in host countries and to contribute to the well-being of communities, especially that of smallholder farmers.
 Agriculture and Poverty Reduction Policy	Through empirical research on significant national poverty reduction policies, policy feedback based on action research, and the sharing of case studies and experience nationally and internationally to advocate for sustainable rural development and effective poverty reduction policies and practice.
 NGO Development	Support NGO capacity building, and create a favourable environment for NGO development.
 Climate Change and Poverty	Empower poor and vulnerable groups in China and southern countries to reduce the loss of food and the negative impact on their livelihoods as a result of climate change; increase resilience of poor people and communities; promote climate justice.
 Gender	Promote gender justice, empower marginalised groups, make their voices heard, and protect their rights.
 Rural HIV/AIDS	Promote health among and the livelihoods of families living with HIV; advocate for the improvement of HIV/AIDS related policies and their implementation.

5. MILESTONES (1987-2017)

The following events mark new chapters for OHK and our partners in mainland China over the past 30 years.



HONG KONG HEADQUARTERS

17/F, China United Centre, 28 Marble Road,
North Point, Hong Kong
Tel: (852) 2520 2525
Fax: (852) 2527 6307
Email: info@oxfam.org.hk
Website: www.oxfam.org.hk

MAINLAND CHINA

OXFAM HONG KONG BEIJING OFFICE

Suite 302, Unit 2, Block D
Landscape Center 10# Jiqingli, Chaoyang District,
Beijing, China 100020
Tel: (86-10) 8572 8359 / 6553 5331
Fax: (86-10) 6551 1521
Email: bj@oxfam.org.hk

BEIJING OFFICE – RURAL AND EDUCATION TEAM

Room 1104, Unit 1, Block D, Yinxing Xiaoqu, No. 104 Beijing Road,
Yunyan District, Guiyang, Guizhou Province, China 550001
Tel: (86-851) 8583 2408
Fax: (86-851) 8583 2407
Email: gzo@oxfam.org.hk

OXFAM HONG KONG GANSU OFFICE

Room F, 26/F Huafu Swiss Palace, No 213 Jinchang South Road,
Chengguan District, Lanzhou, Gansu Province, China 730030
Tel: (86-931) 886 8655
Fax: (86-931) 886 8257
Email: gso@oxfam.org.hk

OXFAM HONG KONG GUANGDONG OFFICE

Room A03, District A-D, 21/F, Jianhe Center, 111 Tiexi Road,
Tianhe District, Guangzhou, Guangdong Province, China 510000
Tel: (86-20) 2812 0446
Email: gdo@oxfam.org.hk

OXFAM HONG KONG YUNNAN OFFICE

Unit 4, Block 7 Xihua Xiaoqu (East),
Kunming, Yunnan, China 650032
Tel: (86-871) 6415 2189 / 6414 2033
Fax: (86-871) 6415 0599
Email: swpo@oxfam.org.hk

